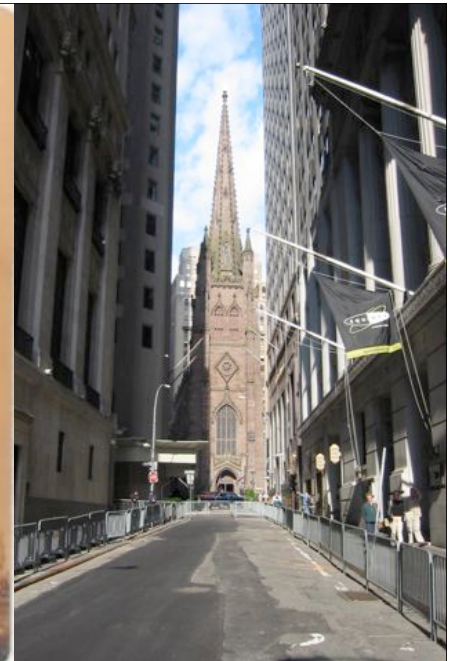
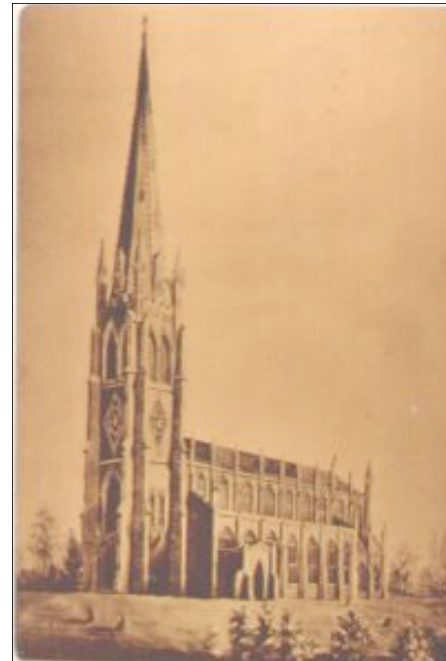
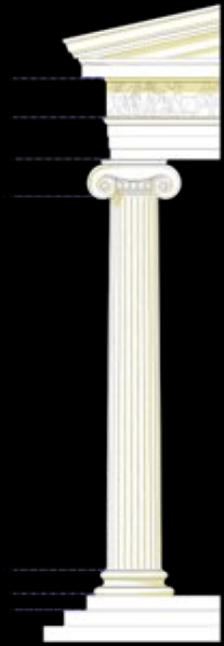


# New York and the Skyscraper

GB Post and the protoskyscraper  
Corporate headquarters and the race for the sky  
The role of code and zoning regulations  
Modern New York skyscrapers, Architecture and structure



1870-1901





Chicago,  
Root

New York,  
Post

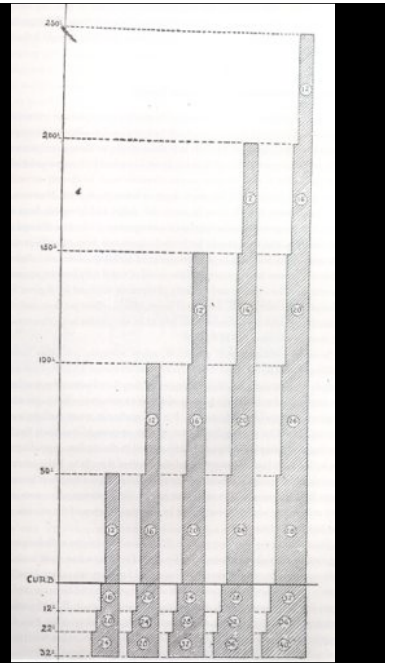
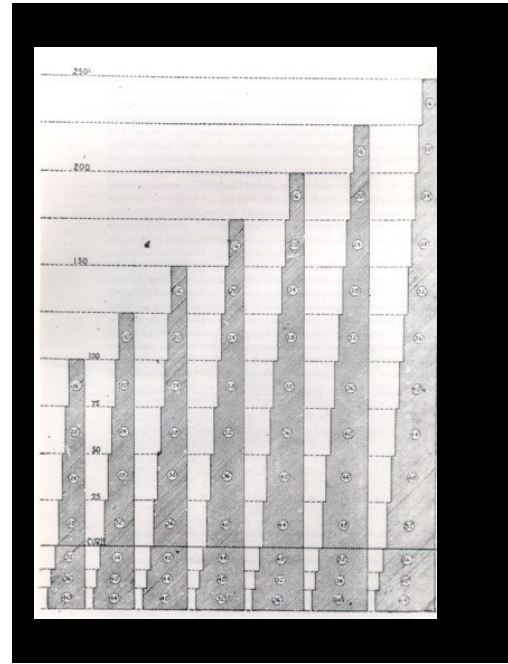
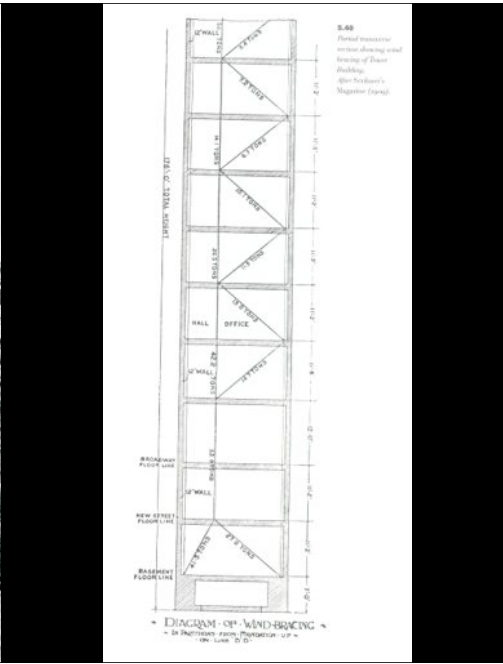


First Equitable Building

George Browne Post  
(1837-1913)



Western Union  
Building  
1875  
230 feet tall

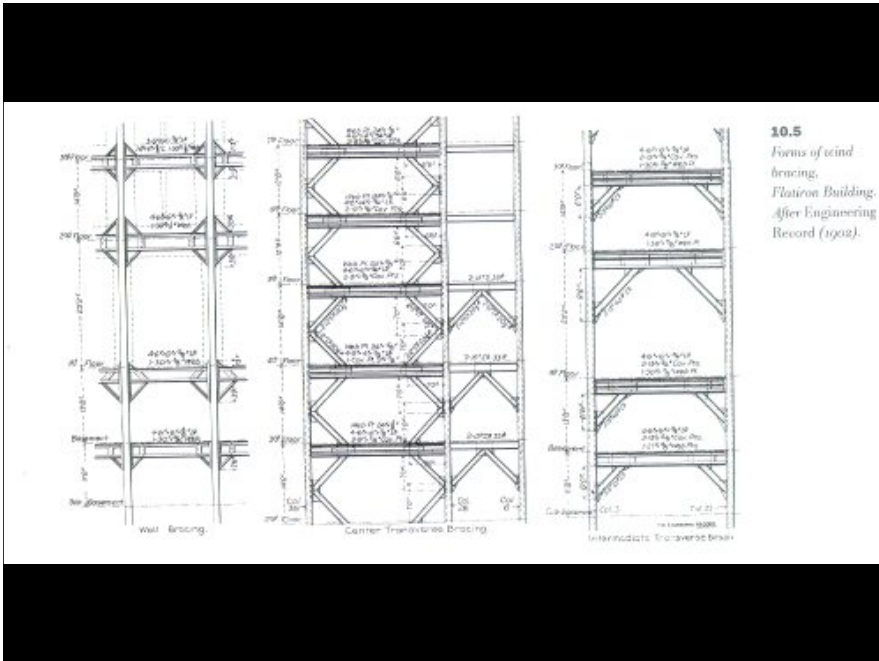






[www.structurae.de](http://www.structurae.de) N. Janberg



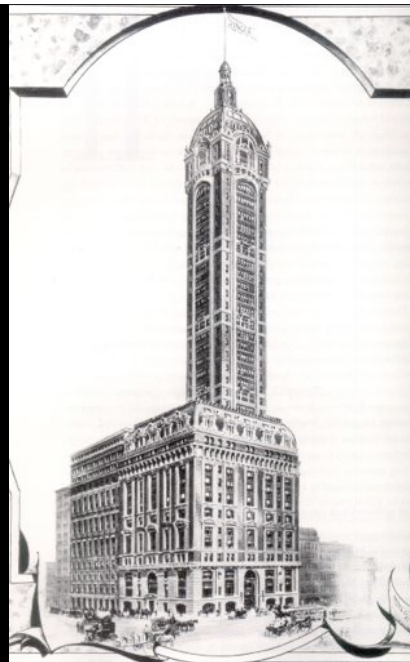




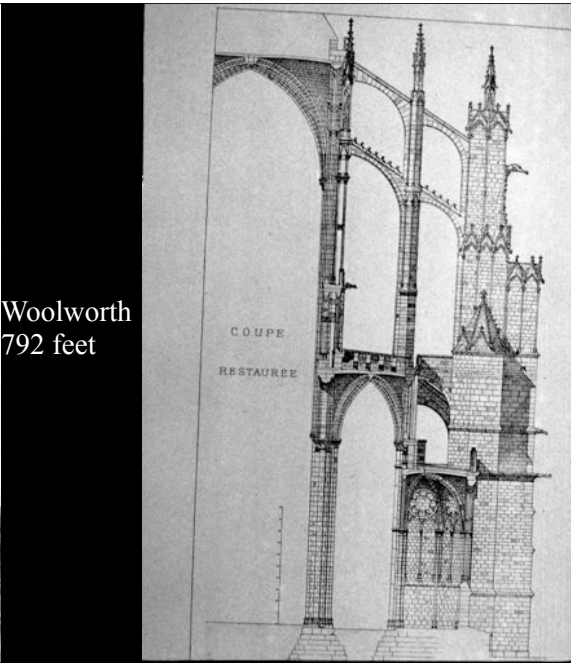
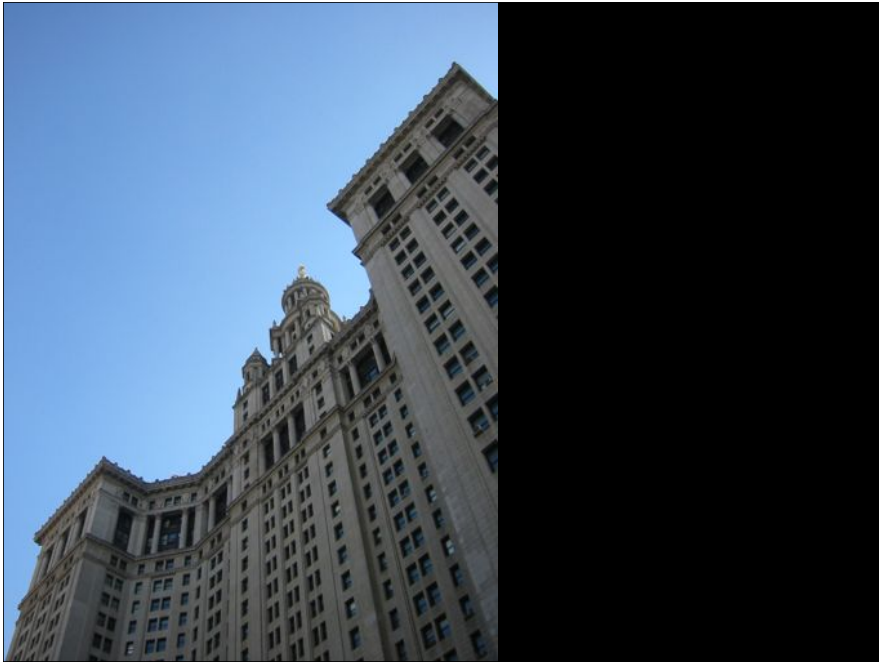
1908  
Singer Building  
612'



Met Life

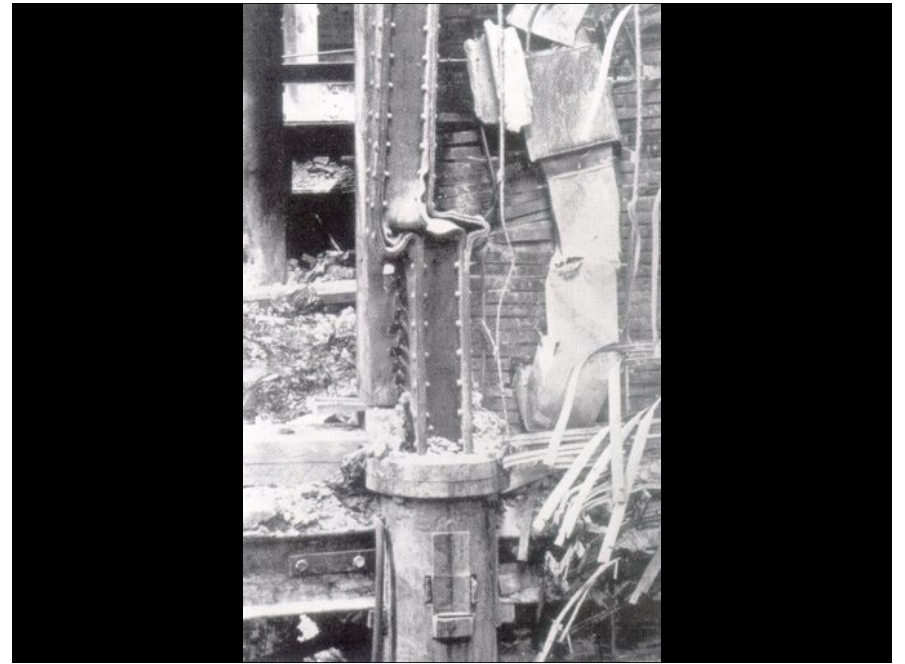
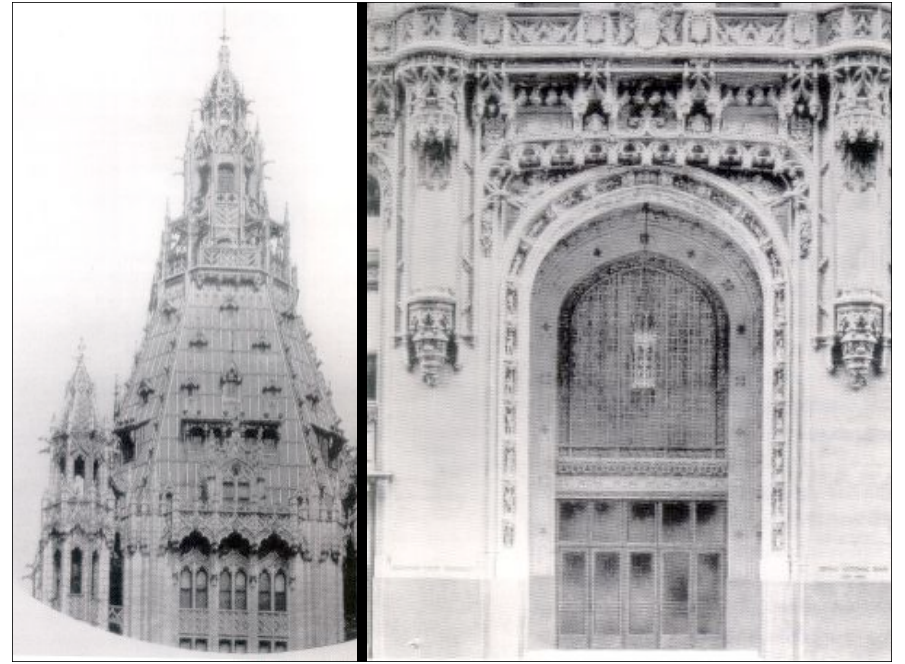
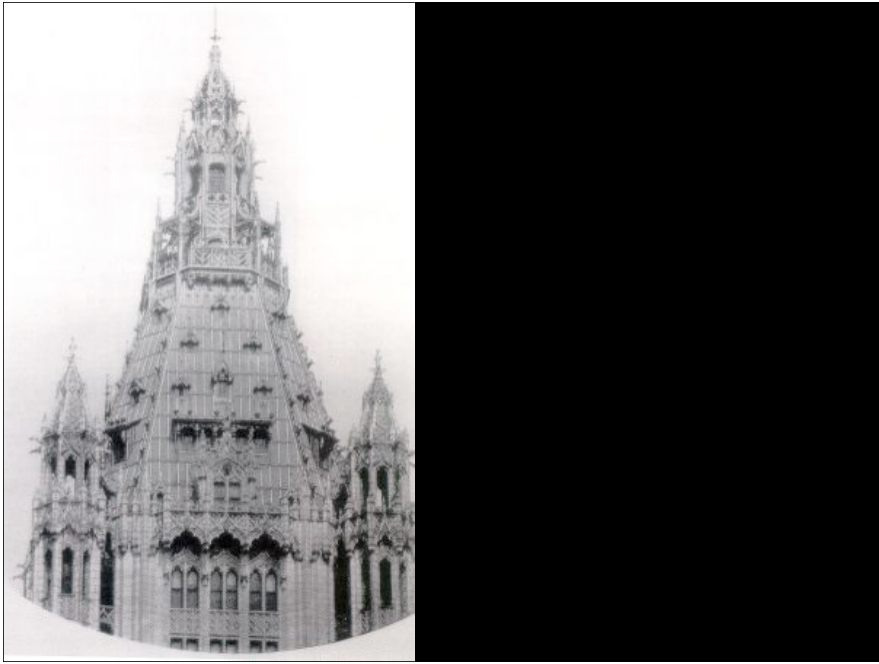


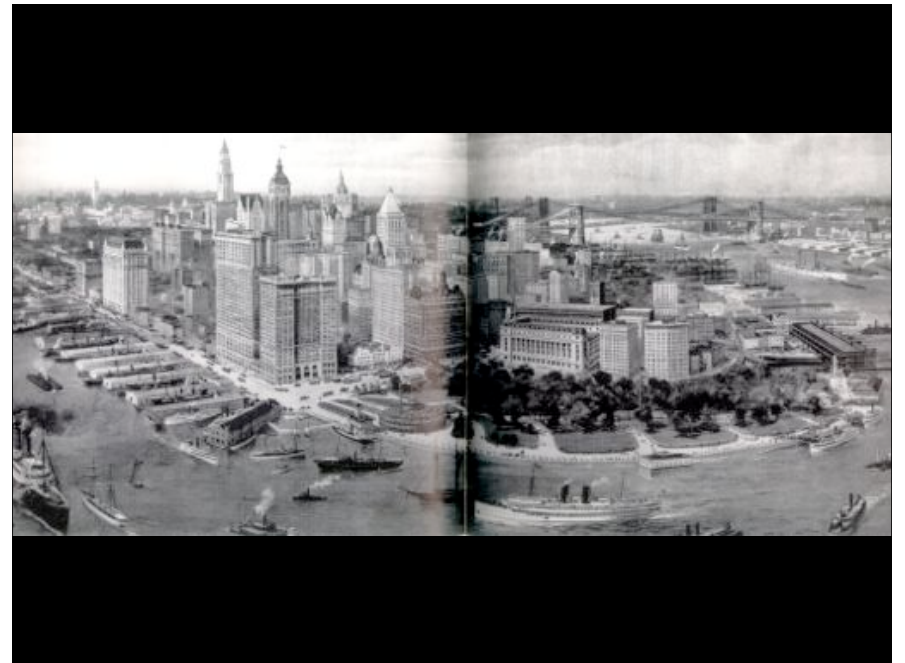


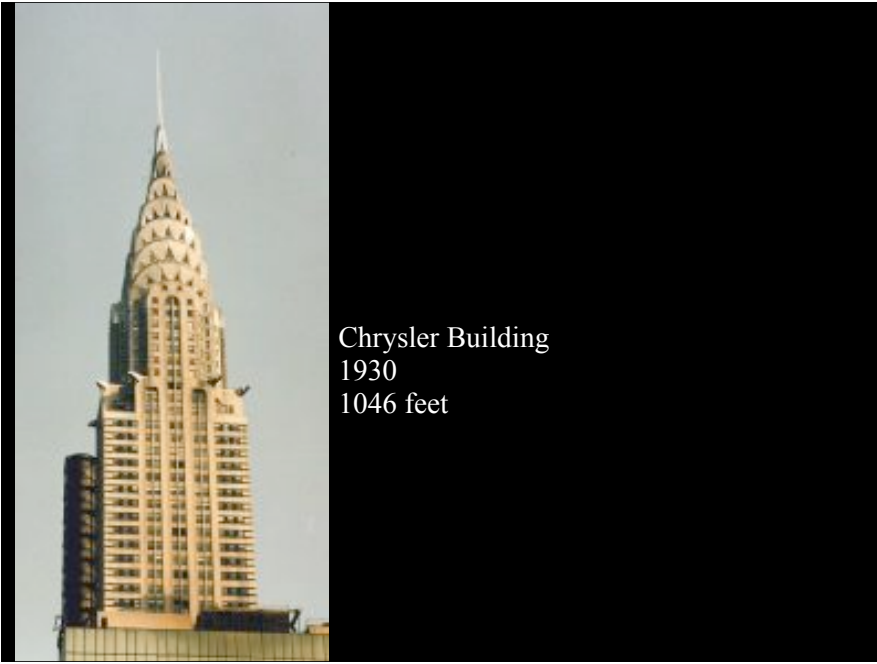


Woolworth  
792 feet









Chrysler Building  
1930  
1046 feet



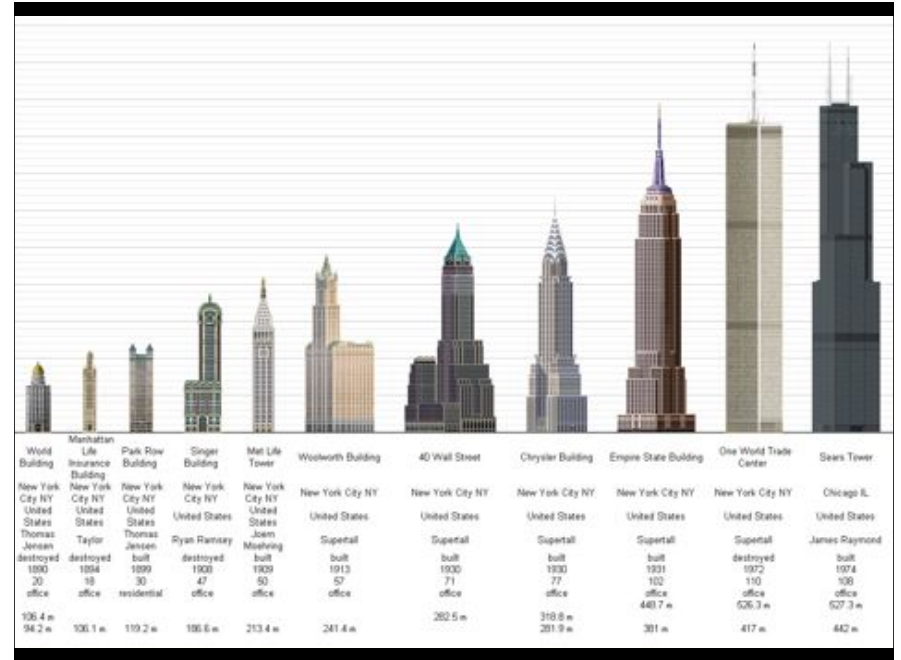
CHRYSLER BLDG  
420 5TH AVENUE  
11-1-1930



CHRYSLER BLDG  
420 5TH AVENUE  
11-1-1930







# The Modern Era





[www.structurae.de](http://www.structurae.de) HABS



[www.structurae.de](http://www.structurae.de) J. Davilus



[www.structurae.de](http://www.structurae.de) J. Davilus

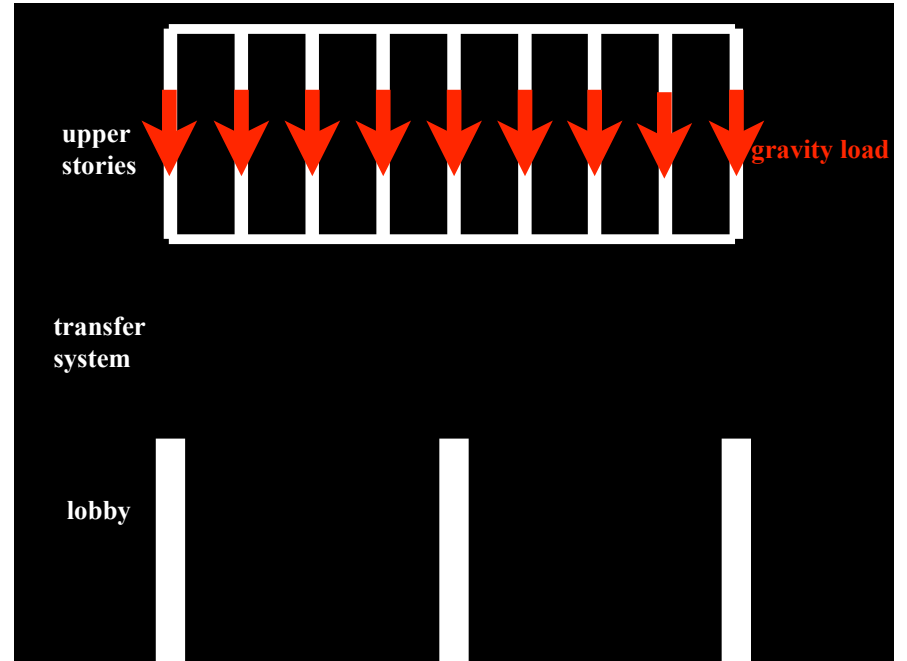


[www.structurae.de](http://www.structurae.de) J. Davilus



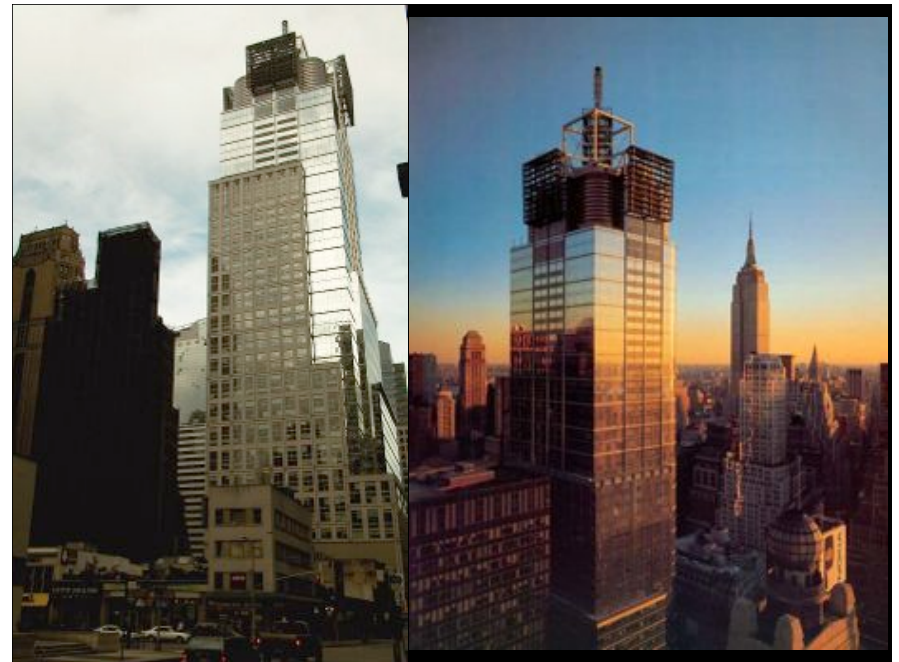








Green skyscrapers of the  
90's-00's



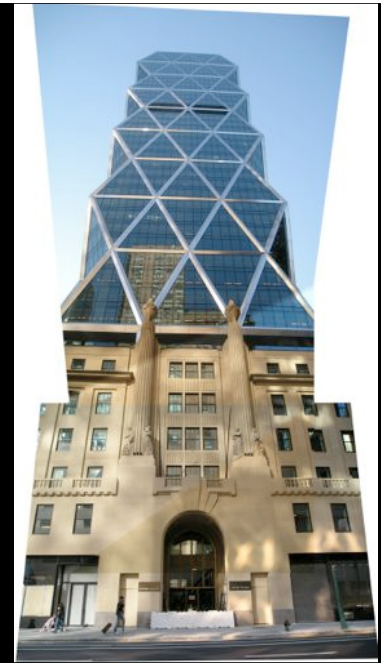
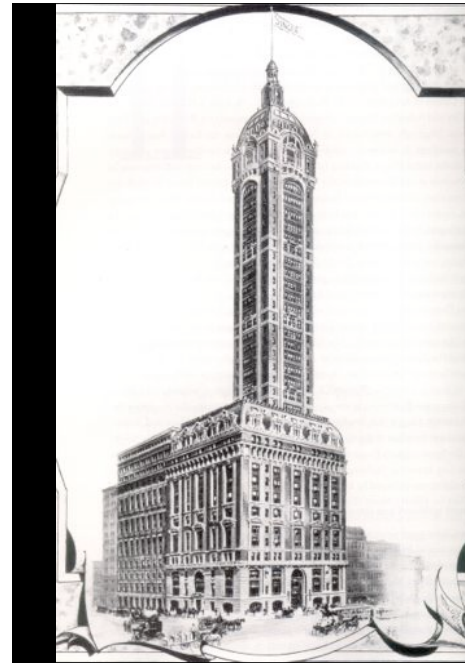
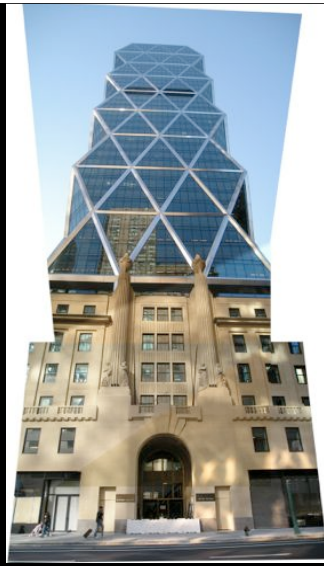
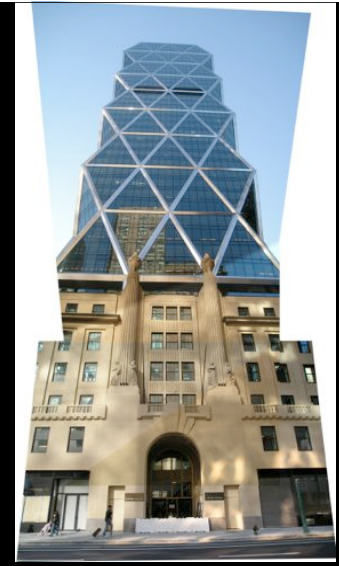


Modern towers of the 90's and 00's



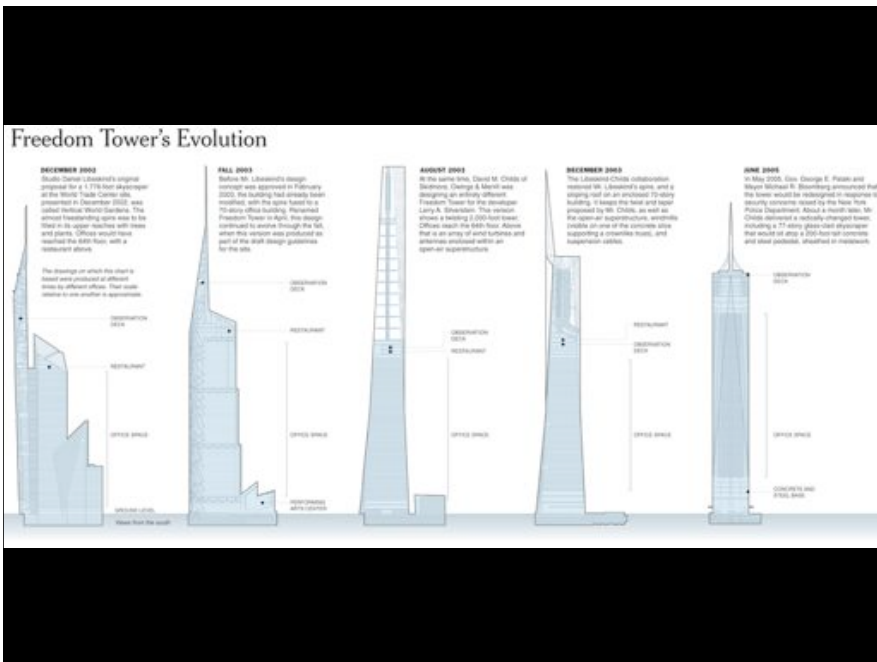
Hearst Tower

Arch: Norman Foster  
Eng: Cantor Seinuk



Try to describe the load path for gravity forces in this structure. Comment on advantages and disadvantages

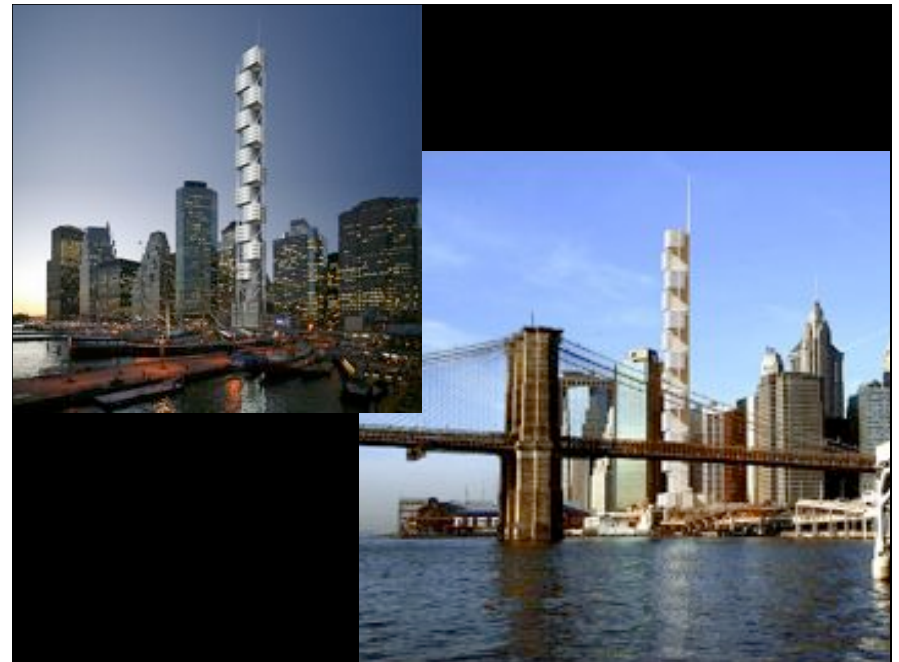
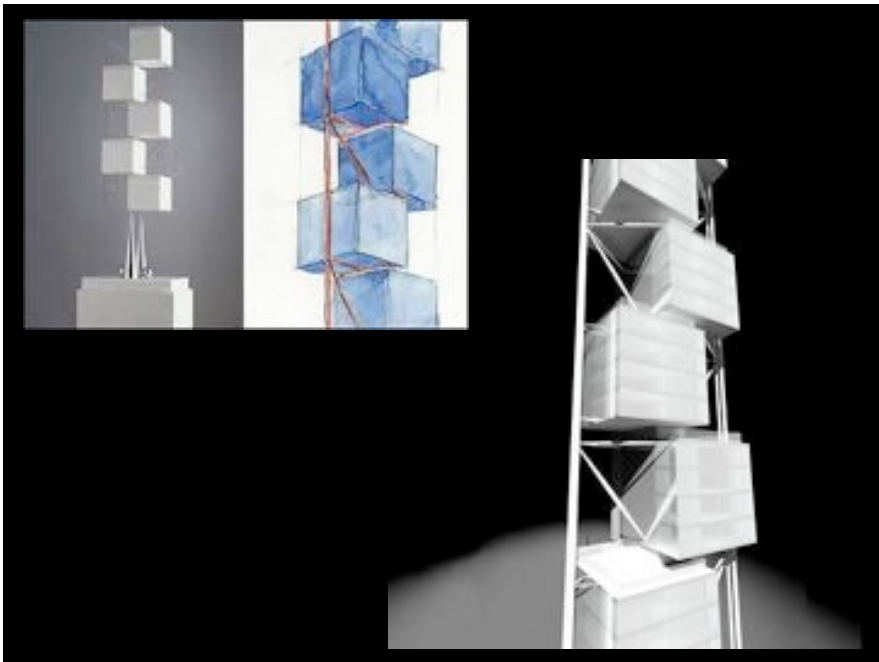
New World Trade Center original proposal



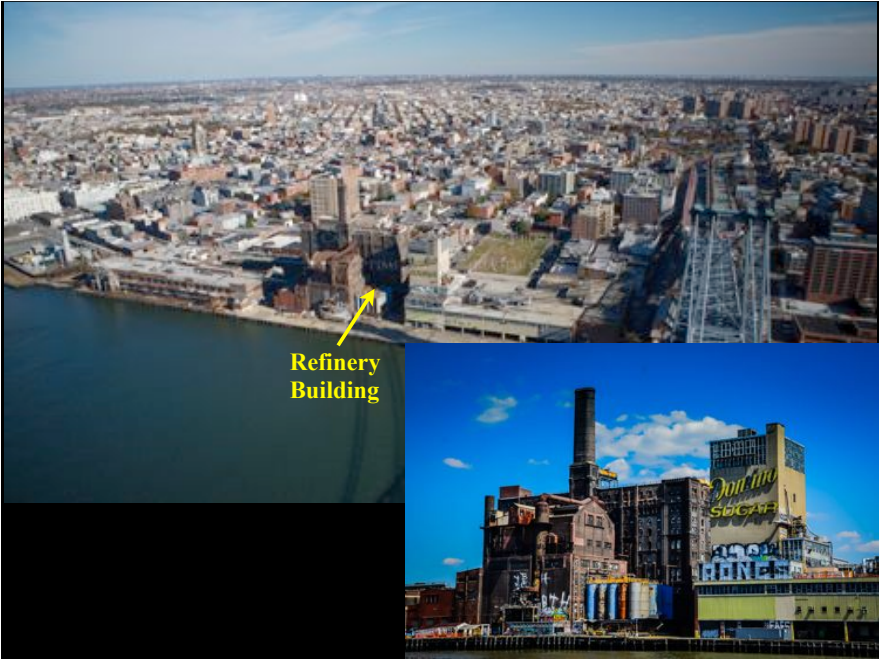
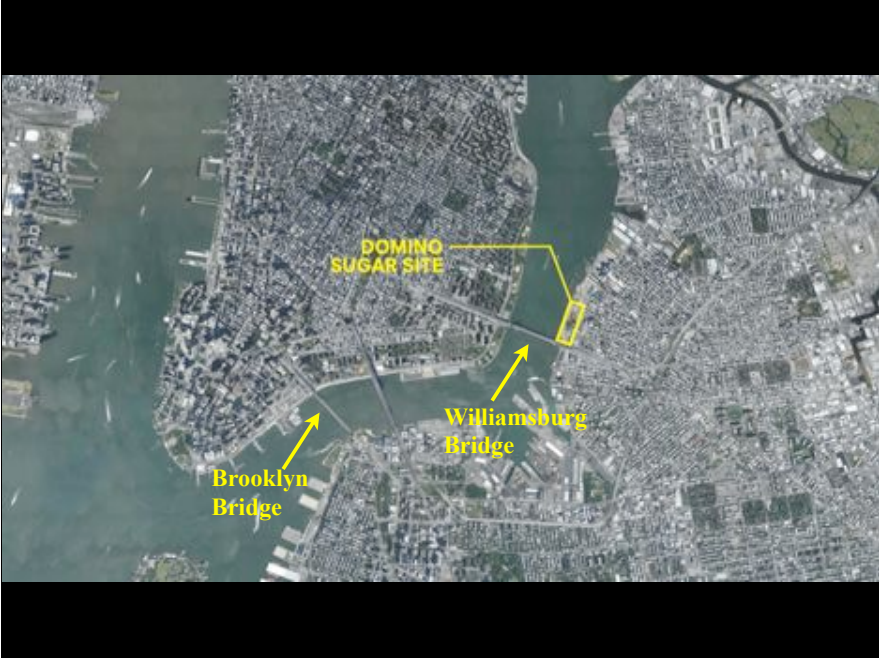
New World Trade Center as-built

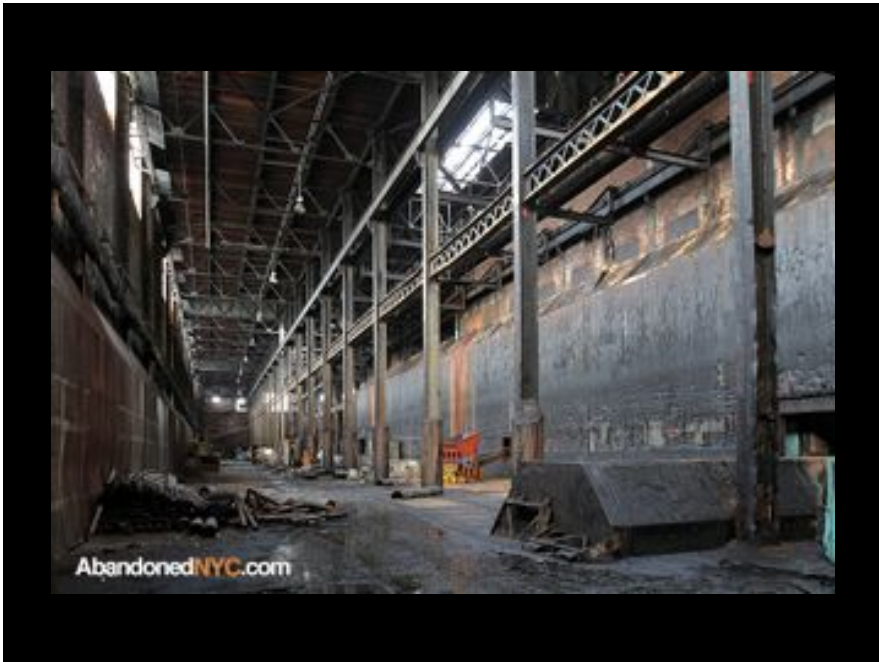
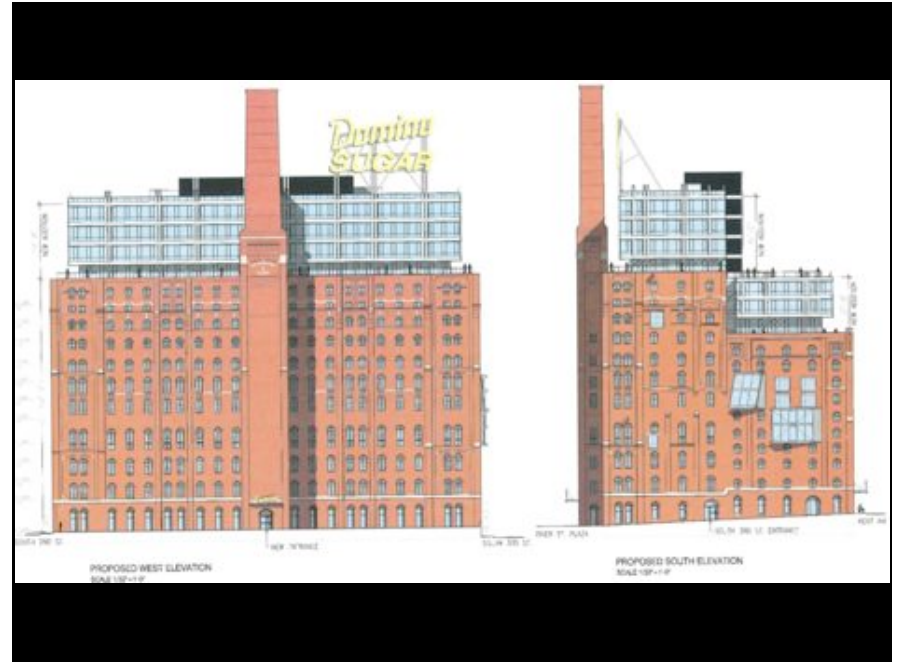
David Childs and SOM



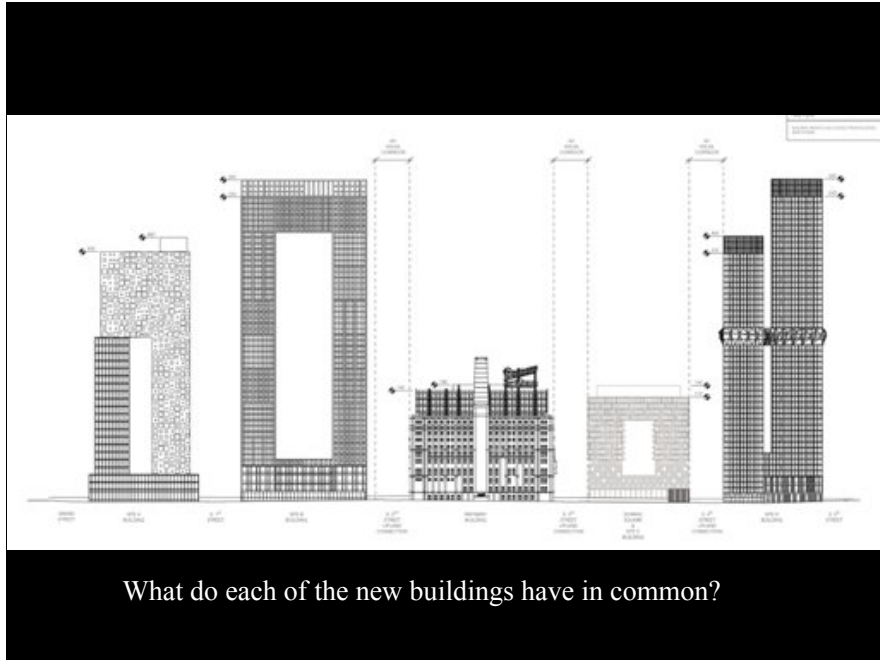
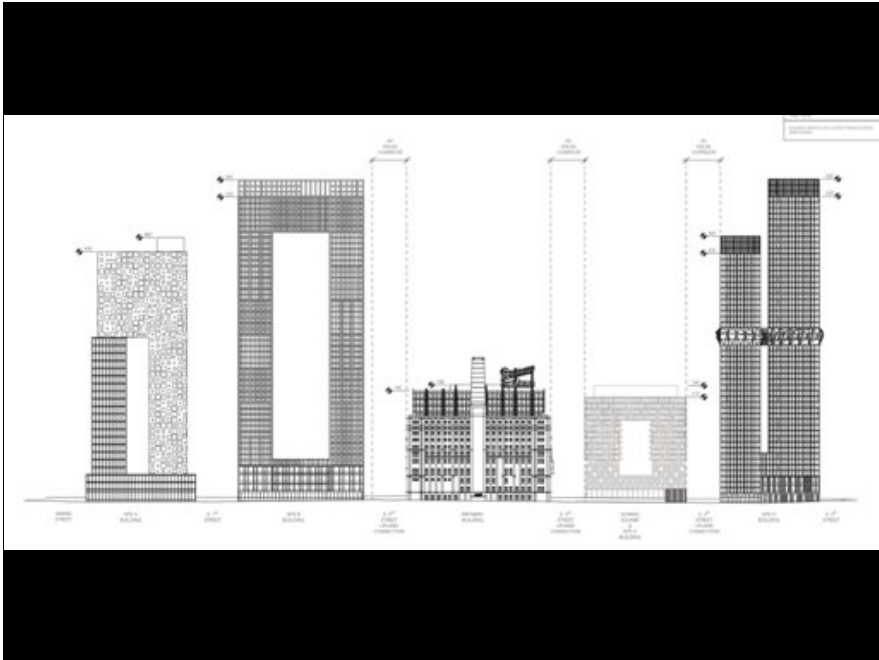


# Repurposing the waterfront

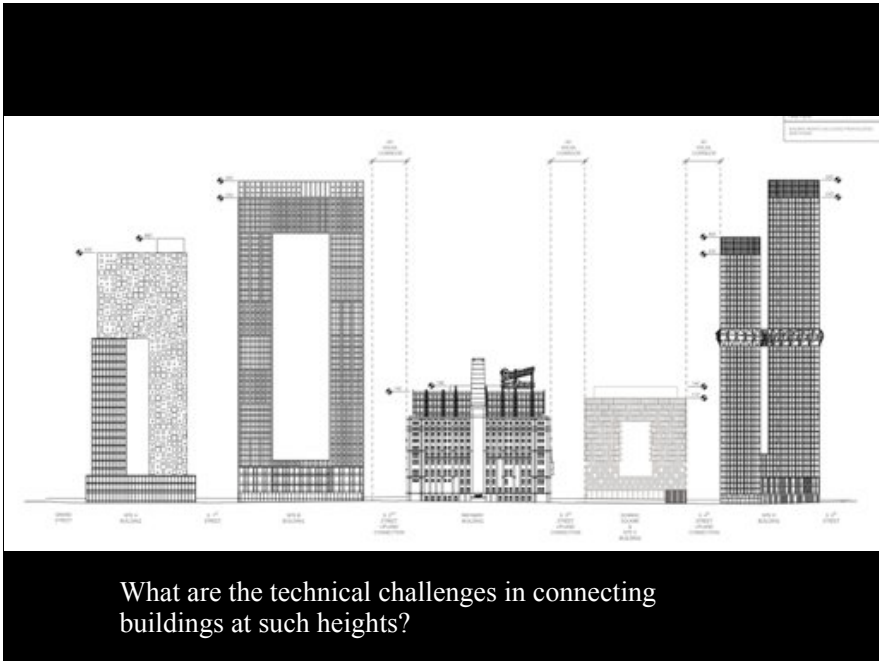








What do each of the new buildings have in common?



What are the technical challenges in connecting buildings at such heights?



